

The Worx

THE BI-ANNUAL **officeworx** NEWSLETTER



SCHOOL'S OUT

We're in to install interactive whiteboards and fibre optic cabling

FOCUS ON

Cotswold Wildlife Park celebrate 50 years of wildlife conservation

PLUS MUCH MORE

Paper prices go sky high, hybrid working and our Strike a Paws winner

#makingadifference



Rob, Katie and Kate visited the **CCP Pantry** this February to deliver a food donation and show Officeworx's support to this excellent new take on a food bank.

The CCP Pantry project opened in 2019 as an alternative to the standard food parcel. Often these parcels are full of tins and unhealthy foods as a short-term measure for the person in need. The Pantry offers **fresh meat, dairy, fruit and vegetables** as well as long-life produce, donated by supporters, businesses and allotment owners who may have excess food going to waste.

To make a donation please email foodshare@ccp.org.uk or visit the CCP Pantry at 340 High Street, Cheltenham GL50 3JF, Wednesday to Friday - 9am - 3pm.

For more information on the CCP Pantry, please visit www.ccp.uk/pantry. Thank you!

We enjoyed making up a fun stationery and craft hamper as a prize in the **St James' C of E Primary School PTA** Summer raffle draw. The PTA had a record breaking year raising a record breaking **£28,000** for the Cheltenham school!



We also helped 8 year old Matilda raise money for the Ukraine Crisis Appeal by printing her beautiful artwork 'The Sun will Shine Through' on our new 3mm hardboard base coasters. These high gloss coasters were a hit with her friends and helped Matilda raise over **£50** for the Ukraine Crisis Appeal.



We were delighted to see your pets **#strikeapaws** on our Twitter page this summer in support of **Gloucestershire Animal Welfare Association and Cheltenham Animal Shelter**.

We designed and created our very own **Officeworx branded bandanas** and handed them out with two requests; a small donation and a picture of your pets sporting their

lovely new attire!

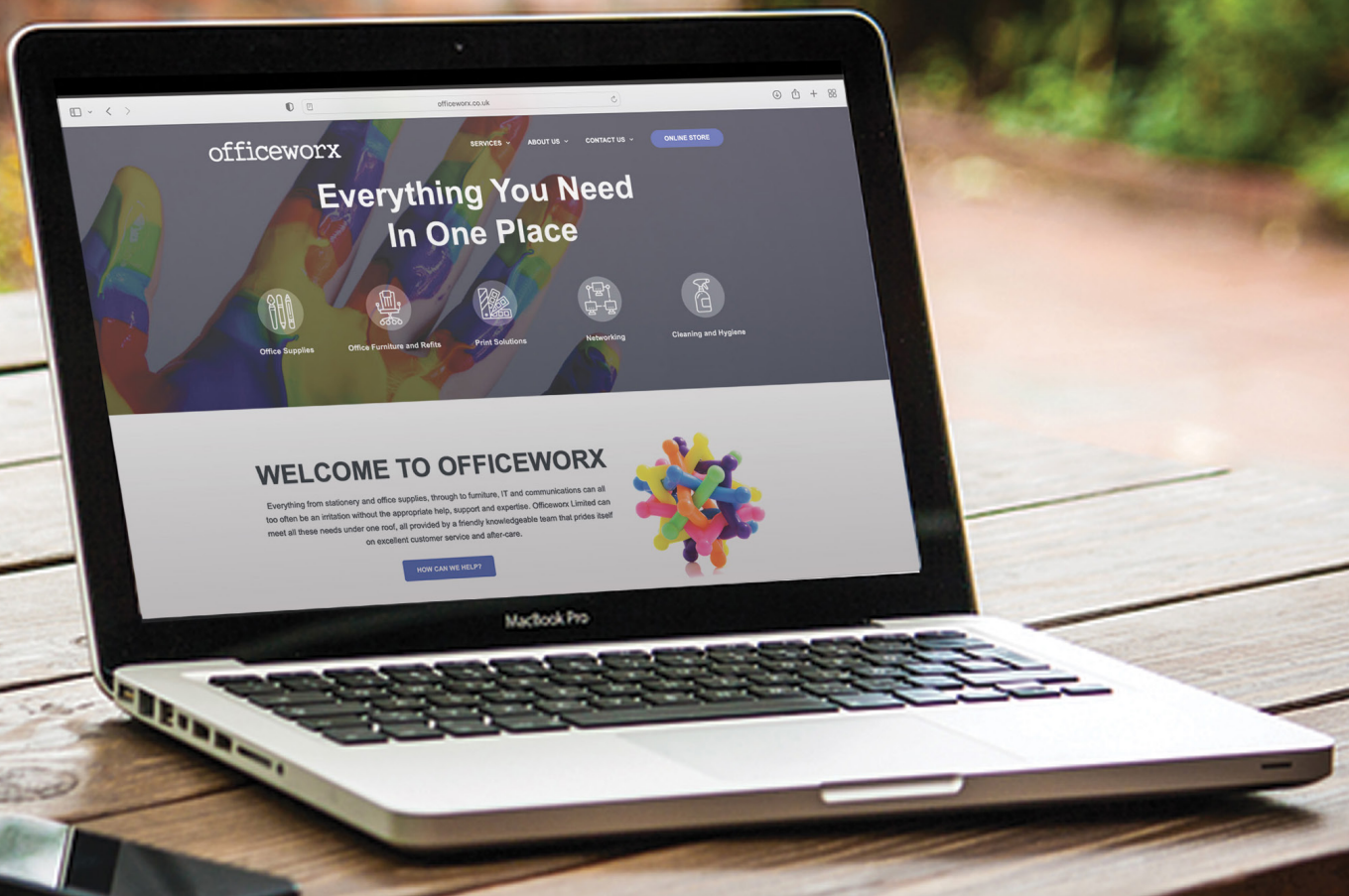
It was Cocker Spaniel **Bailey** who won the competition and received a hamper full of doggy treats.

In total, we raised over **£200** for the charity! Thank you to all who took part. To view all the entries take a look at our Twitter page and search **#officeworxbandana**.



Katie, Carly & Howard with Emma at CAS





Wherever I Lay My Laptop That's My Workplace

In the current **'hybrid era'**, your workplace could be a **coffee shop, a library, a service station or a hot desk** in the office.

According to the Office for National Statistics, 85% of those currently working from home want to use a hybrid approach to both home and office working in the future and the advancement of technology will enable them to do it.

There are clear benefits to flexible working – more time with the family, doing the household chores and walking the dog, with less time and money spent on the commute for a more adjusted work-life balance.

However, Research by Robert Half revealed that **76% of businesses** were concerned about the impact of hybrid working on company culture and loyalty. It's a genuine reason for employers to be anxious as many employees are invisible when they are working away from the main workplace.

Trust is the key and employees need to reward this trust by being driven and productive. As simple as it seems, do your job. You may be able to get your role done quicker than when you are in the workplace due to less distractions, but that doesn't mean you can work part-time because it suits you. Show your gratitude for being trusted to work remotely by being the best you, it's what you would strive for if you were in the office. Dress for work, remove distractions like social media or the television, check in with colleagues regularly and go into the workplace at least once a week to keep yourself engaged.

If you are working from home or if you follow a hybrid approach, be sure to have the perfect working environment. Speak to Officeworx about desking, chairs, IT equipment, ergonomic equipment and office supplies.

01242 584901

sales@officeworx.co.uk

Kensington

Your Office -
In a Bag

shop.officeworx.co.uk



We stock
a wide range
of accessories
needed to maximise
productivity, data
protection and
wellbeing

School's OUT... We're IN

Completed Summer 2022.pdf

August 2022

The school holidays is always a busy time for our IT department and 2022 was no exception! Many schools take advantage of the empty premises to minimise disruption to the pupils. Our engineers worked in schools across the country, completing a range of jobs such as fibre optic and audio visual installations. This often involves working away to complete the work on time!



Stationery



Furniture



Print



Cleaning



Cabling, AV
& Telecoms



officeworx
NETWORKING AND IT SERVICES

PROVIDING YOUR OFFICE WITH FULL IT AND NETWORKING
SUPPORT

STRUCTURED NETWORK
CABLING

For further
information about
our IT department
please visit:

[officeworx.co.uk](https://www.officeworx.co.uk)

and click on:

SERVICES



We designed and installed new cabling at Giggleswick School to enable it to be futureproofed so the network can grow without replacing cables in the future.

"This summer Paul and the team helped MSP LAB deliver an extensive fibre replacement rollout for a large, prestigious Independent School client in Yorkshire. As always, Officeworx exceeded our expectations and delivered on time, on budget, and delighted our client in the process. We trust Officeworx for all of our structured cabling and fibre requirements, and never hesitate to put them in front of our clients. You can depend on Officeworx, and we are very fortunate to have such a strong partnership."

Dean Turner, Chief Operating Officer, MSP LAB



As well as installing new fibre optic cabling, we also terminate and test cables, sometimes installed by others.

On top of our installation services, we offer a fault finding service using our singlemode and multimode OTDRs. These can often find a fibre fault within a few minutes, making it fast and efficient should your network stop working and stopping any guesswork.

Once faults are located, we can work to repair these in the best way possible, sometimes via a temporary fix before a full repair is put in place.

For more information, please visit:

[www.officeworx.co.uk/
networking -and-it-services](https://www.officeworx.co.uk/networking-and-it-services)



The summer holidays saw us replace some existing interactive screens with 83 new SMART interactive screens across 2 schools in an academy trust in Swindon.

"Officeworx once again delivered on our project ahead of time and to a perfect standard. Throughout this project we were met with delays and unexpected issues outside of our project, however the Officeworx team were able to offer key advice and solutions to combat this. This project covered the de-installation, recycling and install of over 80 Smart Interactive panels across two sites. The team, as ever, were friendly and approachable with nothing being too much trouble for them to facilitate."

Kieran Sieluzycki, TPAT Staff
The Parks Academies Trust



Our audio visual installations can range from interactive whiteboards and projectors to interactive screens and TVs.

Our engineers can remove existing installations and dispose of them with full WEEE compliance and replace with new. Where we can, we donate working equipment to other schools and local charities, such as IT Schools for Africa, where even secondhand equipment can make a huge difference to others.

"Officeworx are a fabulous team with a committed social responsibility. They make a real difference in the local community by supporting numerous charities. Thank you for your ongoing support!"

Jenny Evans, IT Schools Africa

Contact us for your network cabling & audio visual requirements | **01242 584901** | it.sales@officeworx.co.uk

office**worx**

FOCUS ON



Above:

Cotswold Wildlife Park,
George the 85 year old Aldabra
giant tortoise eyes up his
50th anniversary cake and a
delighted visitor gets up close at
"Dreamnight at the Zoo"

Cotswold Wildlife Park - 50 Years Young

The Cotswold Wildlife Park & Gardens exhibits over **260 different species** of animals and has been visited by millions of visitors since its doors opened in March 1970.

The park is set in 160 acres of landscaped parkland and gardens 2 miles south of Burford, on the A361, Oxfordshire, England.

The park was opened by John Heyworth, who, with the help of gardeners and keepers, turned the manor house in which he grew up into a world-class zoo. Over the years, the park has grown and evolved, opening inventive new natural enclosures and playing an important role in international wildlife conservation, education and breeding programmes.

Today the park is run by John's son Reggie who continues to evolve the park and make it a place that runs fluently so its visitors have the best experience. Reggie has chosen Officeworks to help with the park's evolving needs and have worked closely with us for over 15 years.

During this time, we've helped to develop and install a fibre optic backbone throughout the park, to aid with the increased networking and telephony needs. Together with providing a wireless network, the park is now able to utilise the latest technology to provide animals in the "Africa Zone", with lighting to mimic their natural habitats.

"It was a lovely surprise therefore to be invited to the Parks 50th Birthday Celebrations in June. To be considered an important part of their business, was a lovely gesture from Reggie." **Martin Croucher**, Officeworks

The park is also renowned for its involvement in **"Dreamnight at the Zoo"** and opened its doors for a very special evening on Friday 10th June. For the seventh time, the Park hosted the invitation-only event for chronically ill and disabled children and their families to exclusively enjoy the wildlife park after hours.

"We would like to thank Cotswold Wildlife Park for all their time, hard work and generosity. Everyone is smiling, laughing and making memories that will last a lifetime."

Catherine Davies, WellChild

Cotswold Wildlife Park is
open every day from
10.00am until 6.00pm
(last admission 4.00pm).

Follow the Park!

Twitter **CotsWildTweets**
Facebook **facebook.com/
cotswoldwildlifepark**.



For the latest visitor guidance and advance e-tickets please visit
www.cotswoldwildlifepark.co.uk

PAPER HIGHS

It's been hard to ignore the **massive price increases** that have been a feature of the first half of 2022. Inflation rates are at their highest levels since the early 1980s and we've all noticed the cost of our shopping, petrol, gas and electricity increasing at uncomfortable rates.

In our industry, one of the most striking increases we've seen has been in the price of paper products.

A4 copier paper is one of our best selling products; it is often used as a benchmark of our pricing and is traditionally sold at a very low profit margin. For this reason, we always aim to sell our A4 paper at a very competitive price and do everything we can to avoid increasing the price.

However, an international paper shortage has been created by a variety of factors and since the start of the year, the baseline cost of A4 copier paper has more than doubled!

There are a myriad of reasons behind the increased prices



but some of the main reasons are:

- Pulp **prices** in January this year were **67% above 2021 Q1** levels. Many mills have struggled to make a profit so have reduced output to focus on higher margin products. This has caused a **surge in demand** along with a corresponding **shortage of paper** which has driven up prices.
- The **gas and electricity** used in paper production have **increased in price** significantly, as have the **chemicals** used in the production process.
- Some of our most popular Xerox papers were previously **manufactured in Russia** and have had to be outsourced to other similar paper mills.
- Shipping **freight and container costs** are at their **highest levels ever**. The well documented **UK haulage issues** and **shortage of drivers** is impacting availability.

Fortunately we deal with a variety of paper merchants and are able to 'shop around' and spot buy pallets of paper to ensure we are getting a good deal. You may have noticed that your usual paper has been substituted with an alternative brand of comparable quality. Hopefully things will settle soon...?



BUDGET LOWS

£79 + VAT
Kensington
Laptop Bag



£189 + VAT
Power Chair



£299 + VAT
Sit-Stand Desk
(price from)



**3 MONTHS
FREE**
Broadband



£41.99 + VAT
Cherry Stream
Desk Set



£21.99 + VAT
Nobo A4 Clear
Whiteboard



Watch this space!

There's a new dog on the scene at Officeworx HQ and he means business. **Rodney** is an 8 month old **cockapoo** who has been causing mischief in the office since he was only 13 weeks old!

Look out for his journey to Officeworx fame with pictures in **issue 12** of **The Worx!**



It's been an exciting start of the year, introducing new products and services to help you work smarter, either remotely or in the good old office! Thank you, as always, for choosing Officeworx to help your business adapt.

Team Officeworx

All prices and information correct at time of printing. E&OE. Aug 22



Officeworx Ltd, 9-10 Croft Street, Cheltenham, Gloucestershire GL53 0ED
(01242) 584901 sales@officeworx.co.uk www.officeworx.co.uk